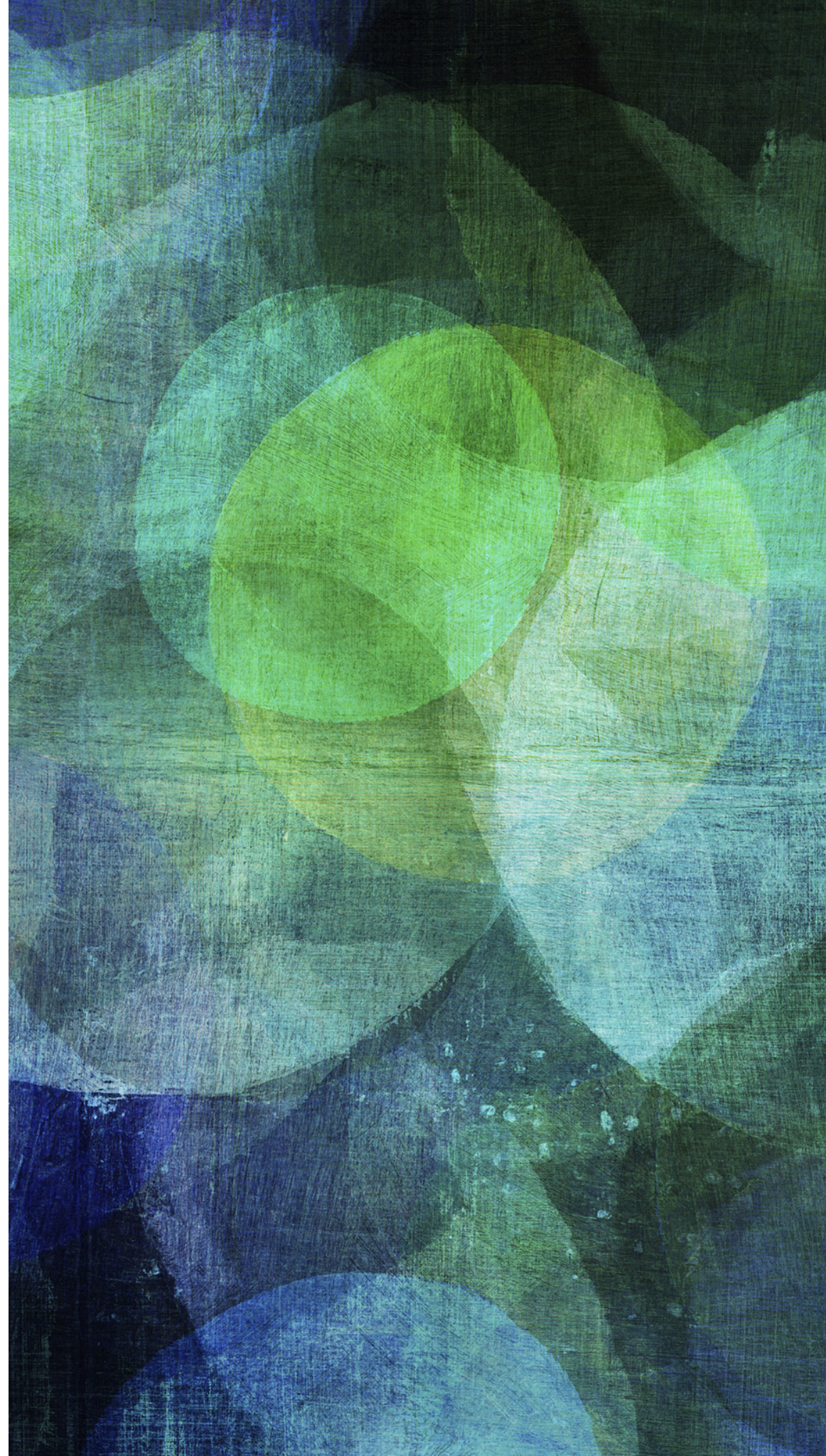


COLLEGE 101 SESSION

*GTCHS School Counseling
Class 2020*





GETTING READY FOR COLLEGE

- Application Process
 - College Application Checklist
 - Naviance
 - Requesting Documents
 - Teacher Recommendations
 - Submitting Documents
 - Test Scores
 - College Essay
- Financial Aid & Scholarship
- Reporting Results

COMPONENTS OF THE COLLEGE APPLICATION

- Application
 - Direct
 - Coalition
 - Common App
- Essay (writing sample)
- Transcript
 - Initial, Mid Year, Final
- Test Scores
 - SAT, ACT, etc.
- School Profile
- Recommendation Forms
 - Note: Common App
- List of Classes
 - Current and Future
- List of Activities
 - In-school
 - Out-of-school
- Fee or Fee Waiver Form
- Optional: Creative Work or Portfolio



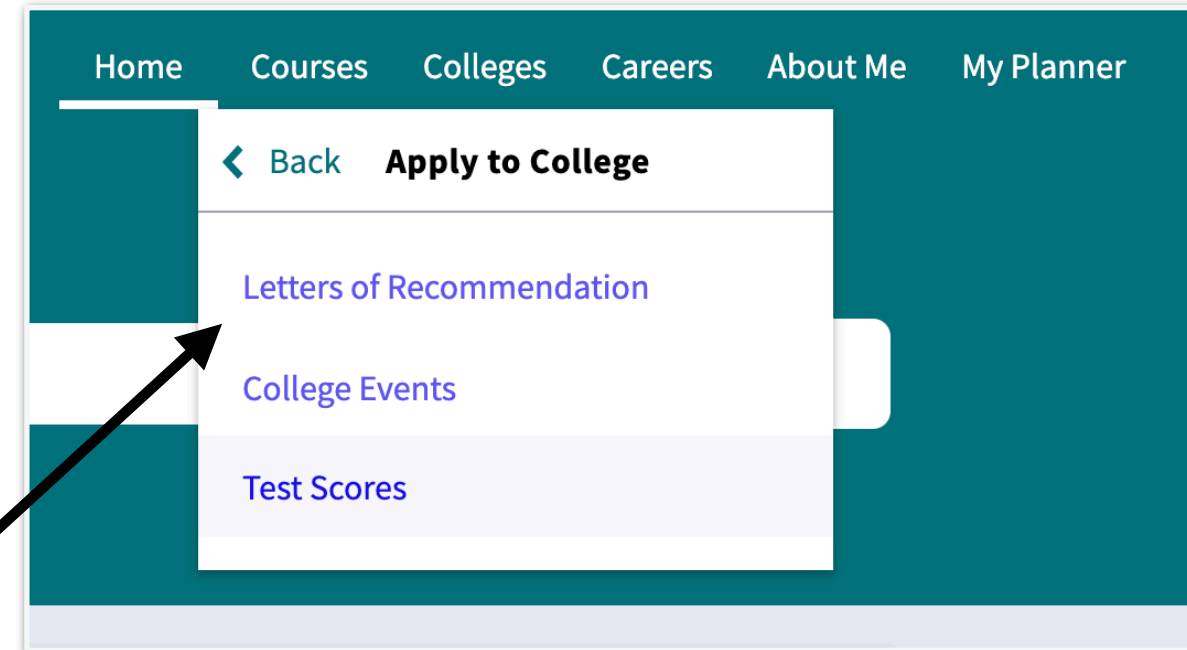
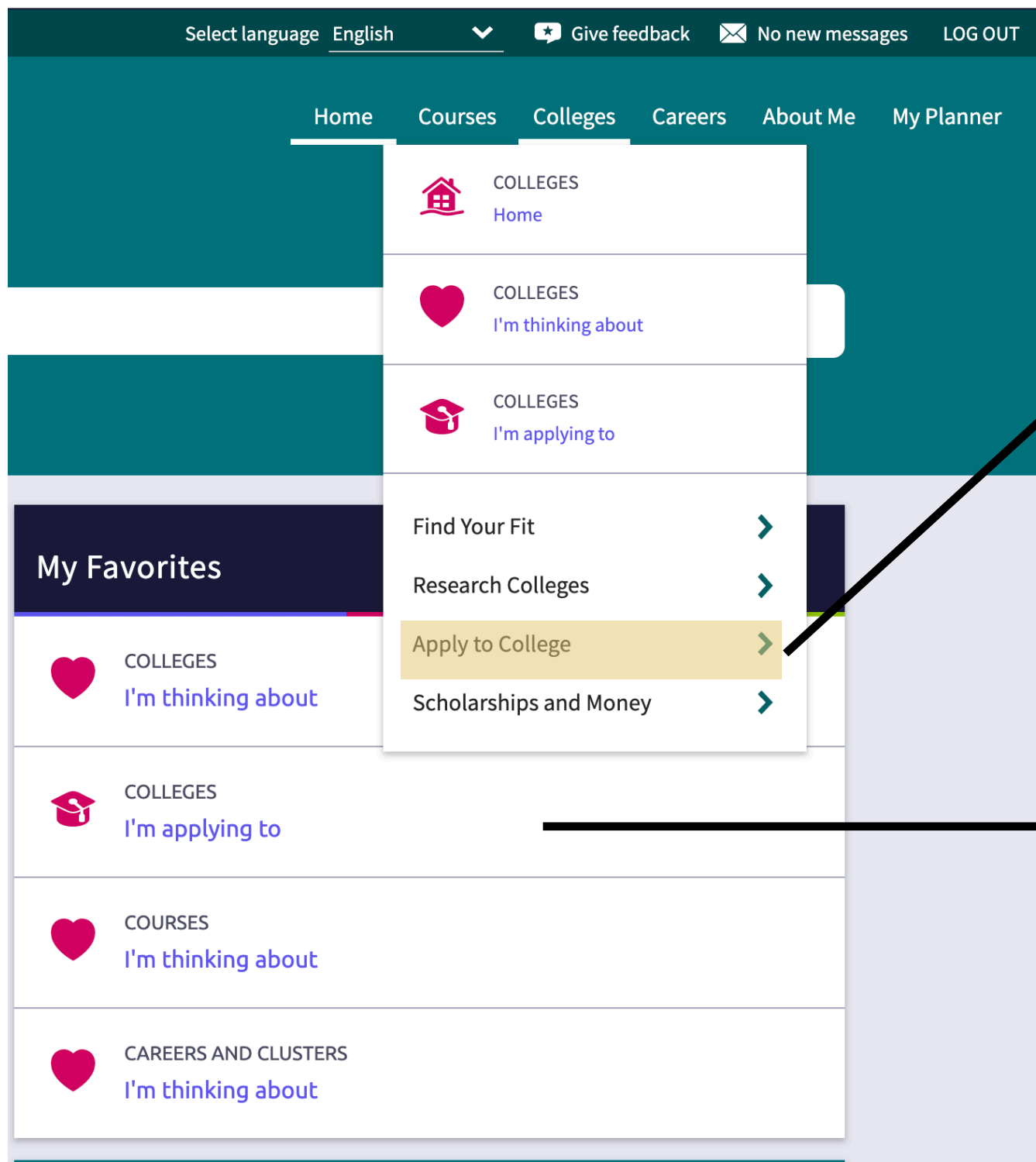
College Application Checklist

.....

▶ Naviance

- ▶ *ALL colleges/universities you are applying to ADDED to application list AND application marked SUBMITTED*
- ▶ *Input ALL standardized test scores (SAT, ACT, SAT Subject Tests, PSAT, ACT)*
- ▶ *Completed “All About Me” section and included a resume.*
- ▶ *Common Application: You have linked and matched your Common App account with Naviance.*

NAVIANCE – STUDENT SCREEN



Navigating Naviance

1. *Clicking on 'Colleges I'm applying to' takes you directly to creating your college application list.*
2. *To request a letter of recommendation, then you will need to click 'Colleges' at the top and then 'Apply to College'.*

NAVIANCE – STUDENT SCREEN

Colleges I'm applying to

 Search for colleges

Colleges I'm applying to




 Search for colleges

ⓘ It looks like you are not currently able to apply to Common App schools.
Match your Common App account to Naviance Student account to get started.

Match Accounts

 Application Milestones  Compare Me

* = extended profile available

College	Type	Deadline	Expected Difficulty*	Transcripts	Office materials	Submission Type ⓘ	Application	
Clemson University	PRI	Priority December 1	N/A	no request	Pending		Unknown ▼	MORE ⋮
North Greenville University	RD	Regular Decision August 25	N/A	no request	Pending		Unknown ▼	MORE ⋮
Presbyterian College	EA	Early Action November 15	N/A	no request	Pending		Unknown ▼	MORE ⋮

NAVIANCE – STUDENT SCREEN

Great news! Clemson University would like to connect with you.

No, Thanks

Connect?



Clemson University [Applying To](#)
Clemson, SC, United States | www.clemson.edu

Communicate ▾

Apply online

Learn More ▾

Overview

Studies

Student Life

Admissions

Costs



INTERESTED IN YOU 8

THINKING ABOUT 3

APPLYING TO 5




MORE ⋮

NAVIANCE – ADMIN SITE

General	Courses	Plan	Scores	Assessments	Colleges	Resume	Scholarships	Journal	Documents	Careers	Success Plan	Post-grad
active applications	milestones	history	graphs	prospective colleges	comparison	event registrations						

ACTIVE APPLICATIONS

 [Print summary](#) | [Print detail](#)

<input type="checkbox"/> all	College	Delivery Type	Office Status	Student Status	Common App Status	Type	WL	DF	Interest	Expect	Result
<input type="checkbox"/>	Boston Coll Carroll School of Management		Initial materials submitted	Submitted	Not in list	EA					Accepted
<input type="checkbox"/>	Bryn Mawr Coll		Mid-year submitted	Submitted	Not in list	EA	Yes				Waitlisted
<input type="checkbox"/>	Case Western Reserve Univ		Mid-year submitted	Submitted	Not in list	EA					Accepted

GTCHS School Counseling Office

1. Sends documents every Friday **IF** all information is updated in Naviance.
2. Initial transcript is end of Junior year. Mid year is Summer and Fall Term. Final transcript is sent to your intended post-secondary institution.

Student's Responsibility

1. Updating Naviance, reaching out to teachers about recommendations, and notifying your counselor of any documents not received.
2. Reporting results of all applications.

READY TO APPLY? WHAT IS NEXT?

Before you start your application, make sure you have everything you need.

- ▶ *Demographic Information*
- ▶ *Copy of high school transcript*
- ▶ *List of all classes (past, present, and future)*
- ▶ *List of activities*
- ▶ *Prepared college essay*

- ▶ *Listed all colleges in Naviance*
- ▶ *Indicated Submitted*



THINGS TO CONSIDER WHEN APPLYING

Make sure you have done your research on the schools you are applying to this fall.

Do you meet the admission criteria?

Did you check the freshmen profile?

Do they have your major or a field of study that best meets your career needs?

What are my deadlines? Early Action? Early Decision? Regular Decision?

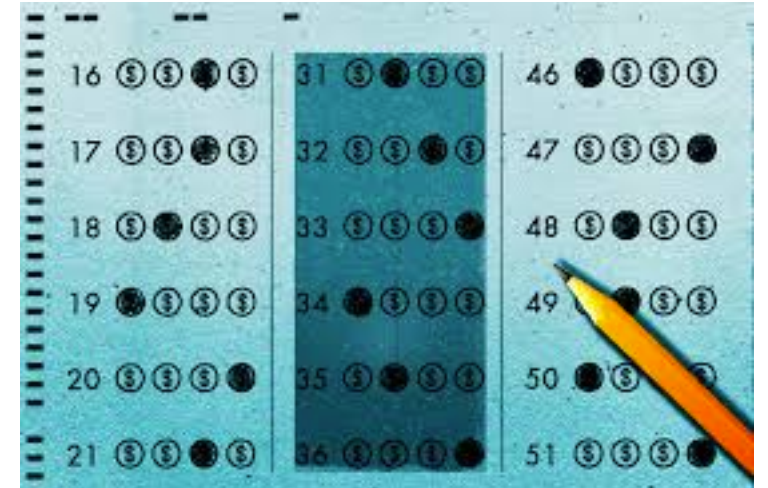


Did I apply to more than one school?

What are my backups?

OTHER THINGS TO CONSIDER.....

- Test Scores and Retaking the SAT or ACT
 - Most schools will have a November test date deadline. Some will take the December deadline. It is important to check this deadline with your school.
 - Test scores should be sent directly to your school from ACT or SAT. While we can send unofficial test scores, college admissions want these to come directly from the testing company.



PUTTING TOGETHER YOUR COLLEGE ESSAY

- Not every college requires an essay, but in case they do, consider using social media.
- Example:
 - “Why Davidson?:
 - Instagram
 - Twitter
 - Facebook



19-20 Common Application Essay Prompts
<https://www.commonapp.org/whats-appening/application-updates/2019-2020-common-app-essay-prompts>



DON'T FORGET.....

.....

- Financial Aid
 - FAFSA - Opens October 1
 - CSS Profile
- State Scholarships
 - Palmetto
 - Life
 - Hope
- Finding money for college!
- College App Day & Financial Aid Night

FOLLOW US

- Remind 101 - Required for Seniors
 - Text 81010 - @gtchs20
- Instagram
 - @gtchsguidance
- Twitter
 - @gtchsguidance
- GTCHS School Counseling Website
 - Scholarship Blog

Upcoming College Events

TD Convention College Fair

Financial Aid Night

College App Day



Greenville Technical Charter High School

Educating Tomorrow's Leaders Today

Home

Our School

Admission

School Counseling

Find Your Way

– High School Resources

Academic Success

Career Development

Social/Emotional Development

Middle College Program at GTCHS

For Seniors

Naviance Student Connection

Scholarship Blog

Connect with Us

NEED MORE ONE ON ONE HELP?

*Please schedule an appointment
with your school counselor.*

*Ms. Burrow
last names: A - Ka*

*Ms. Beaver
last names: Ke - Z*

